

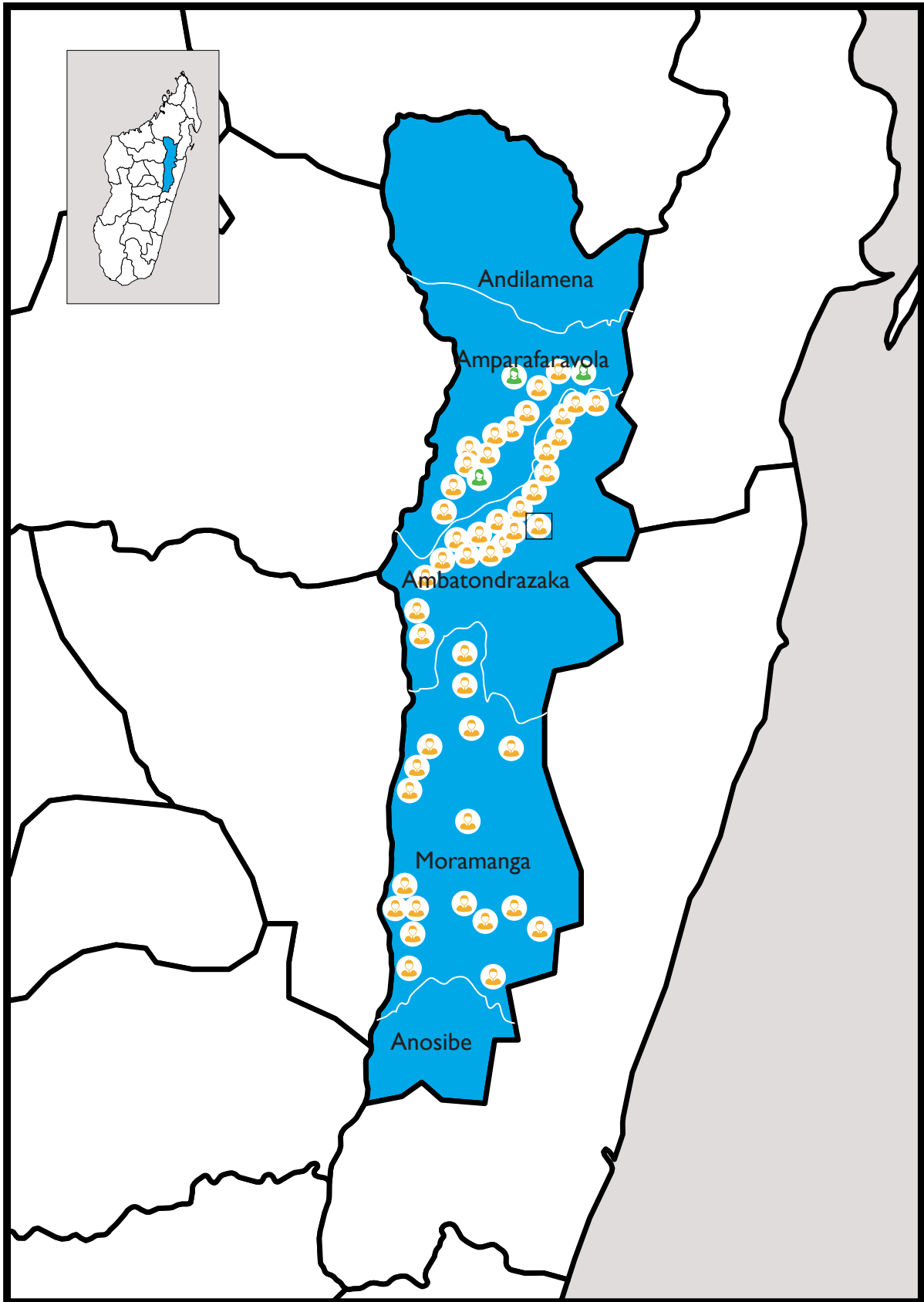
Femme maire



Homme maire



Homme maire moins de 30 ans



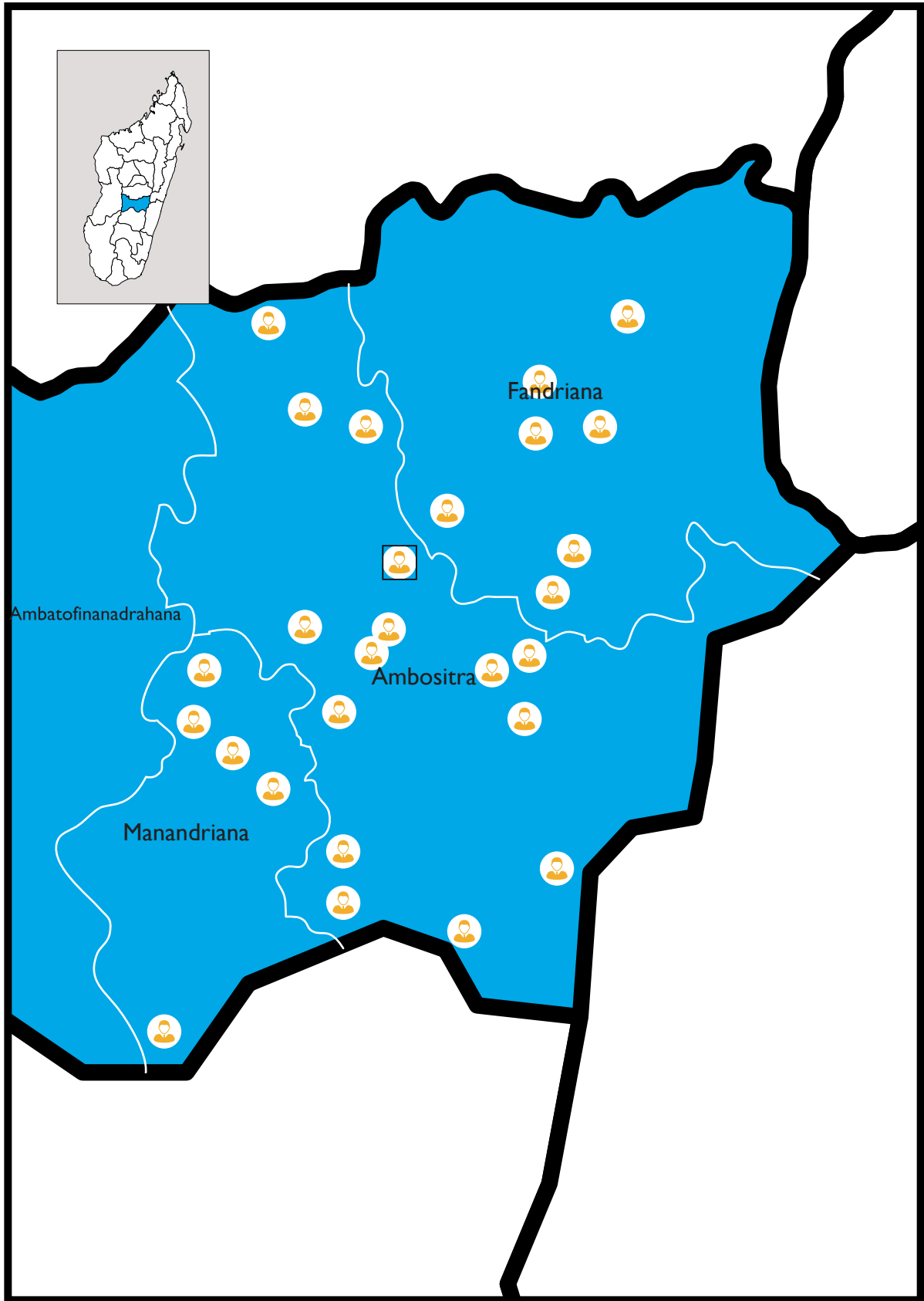
Femme maire



Homme maire



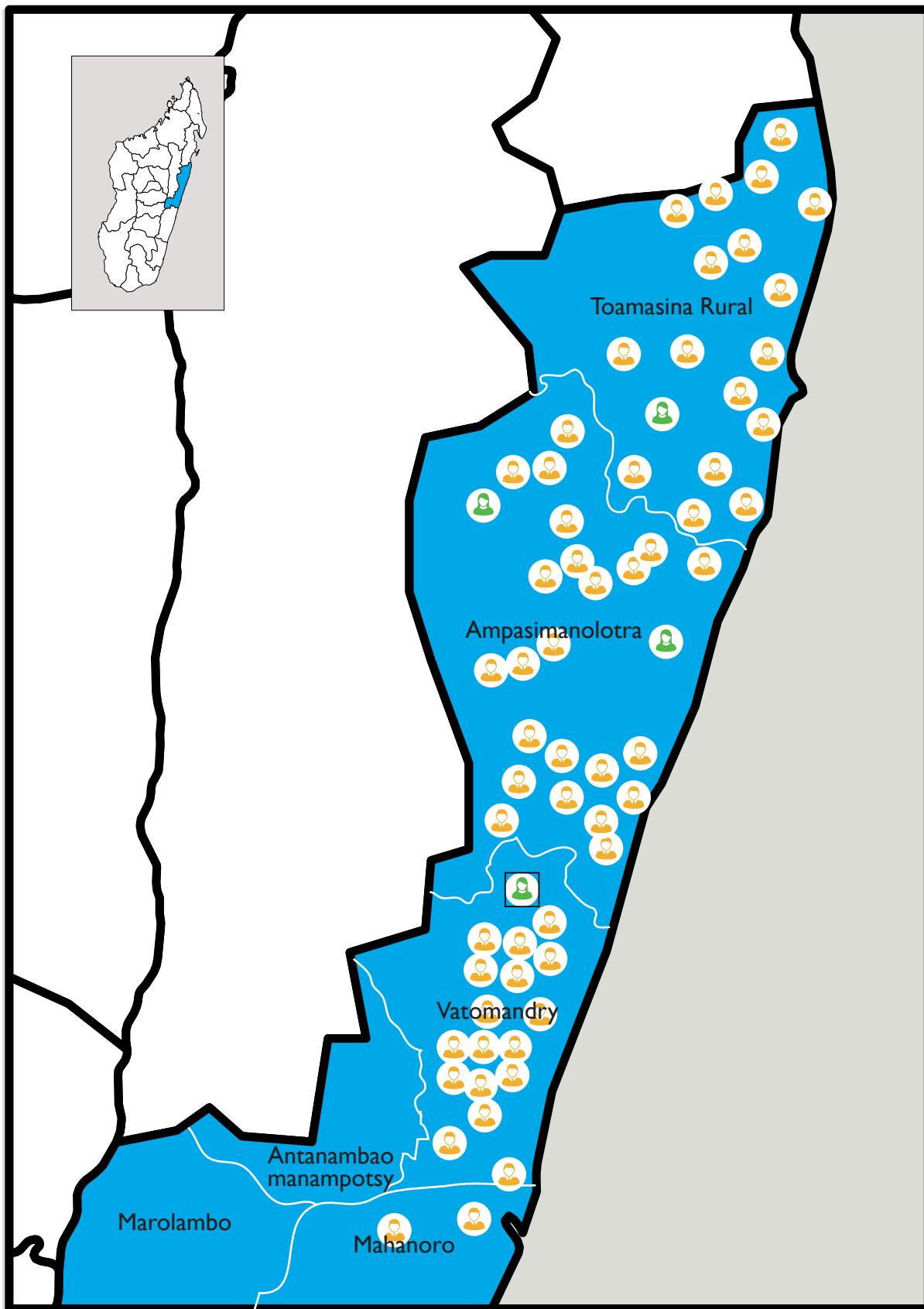
Homme maire moins de 30 ans



Homme maire



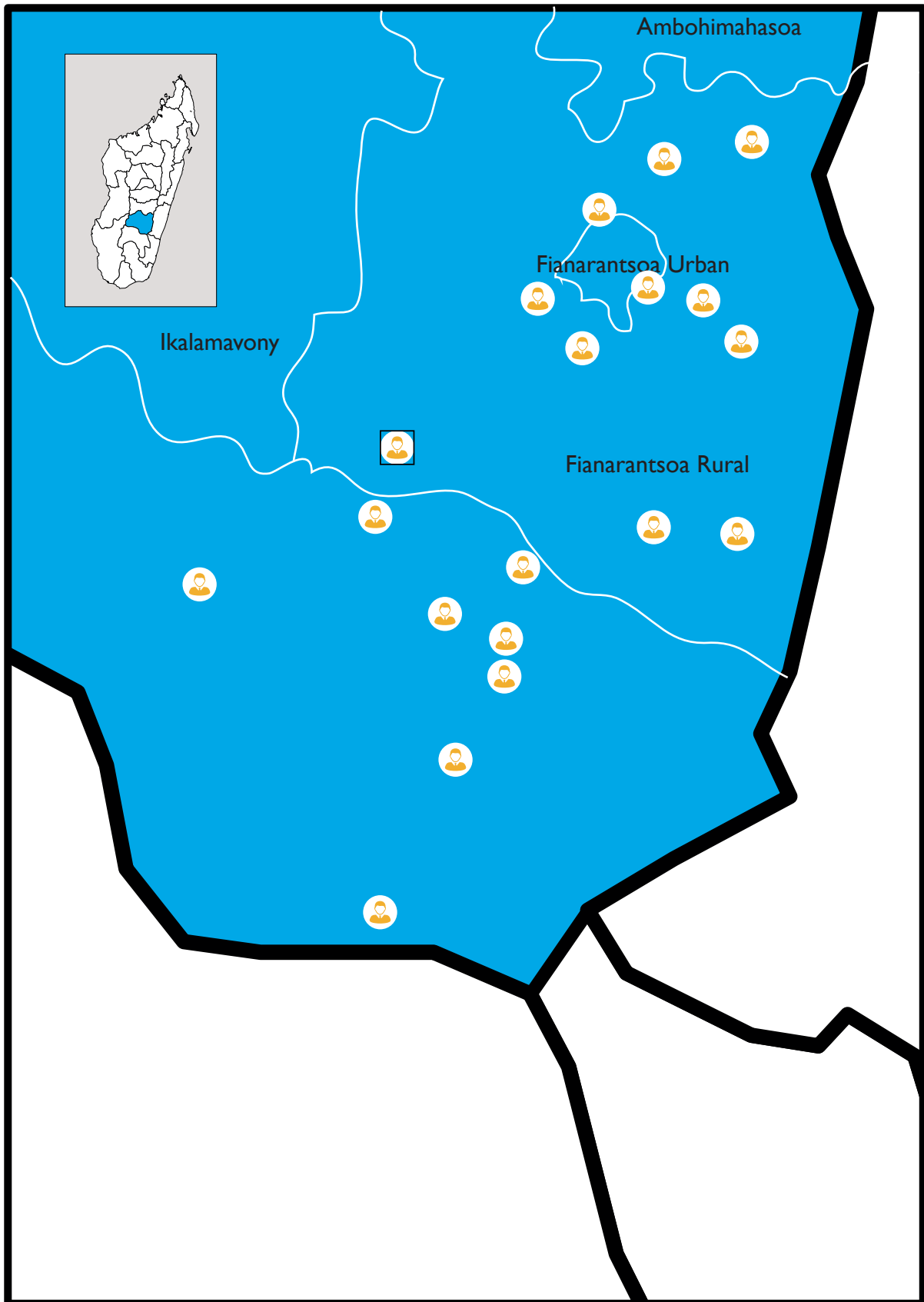
Homme maire moins de 30 ans



Femme maire moins de 30 ans



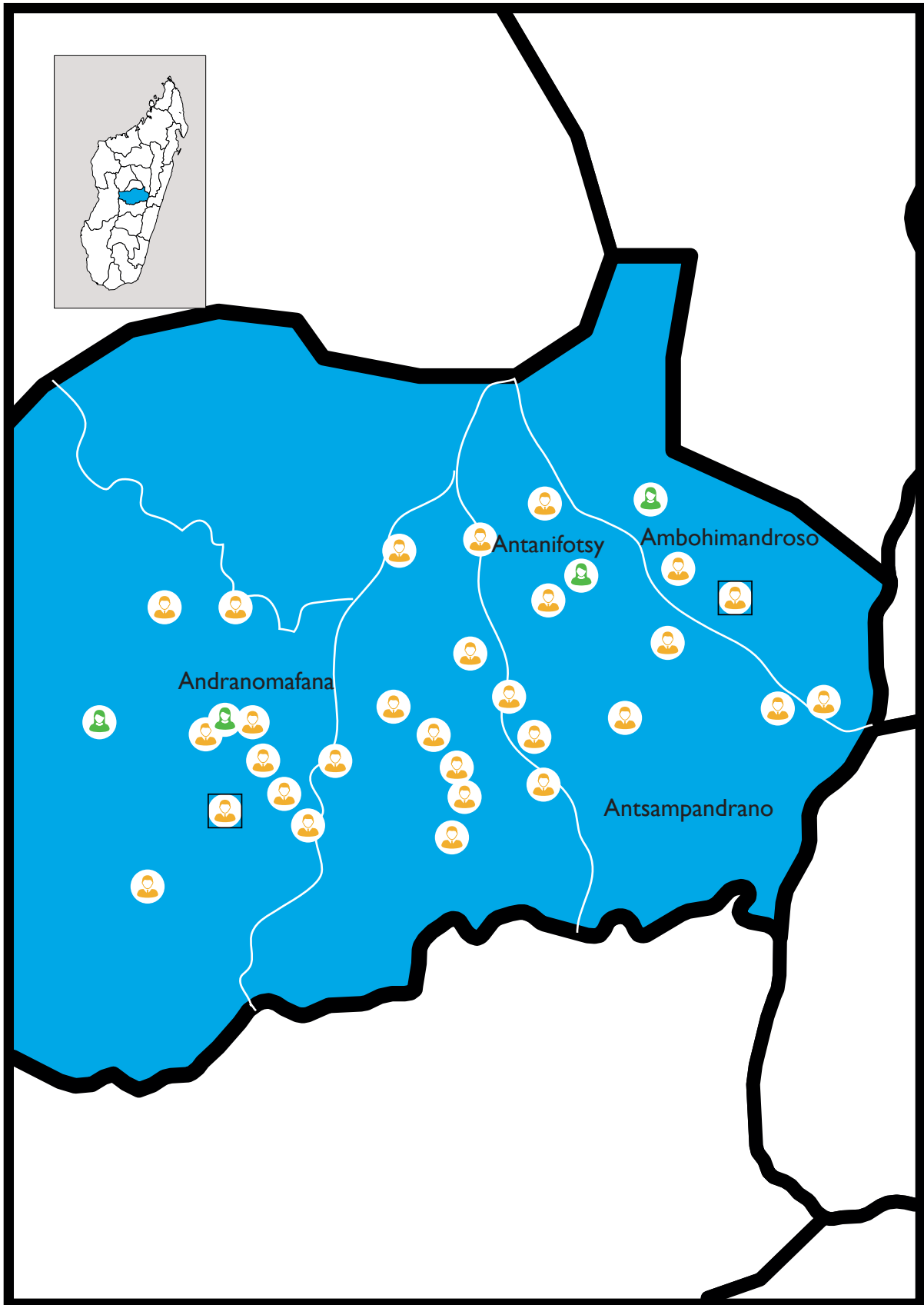
Homme maire



Homme maire



Homme maire moins de 30 ans



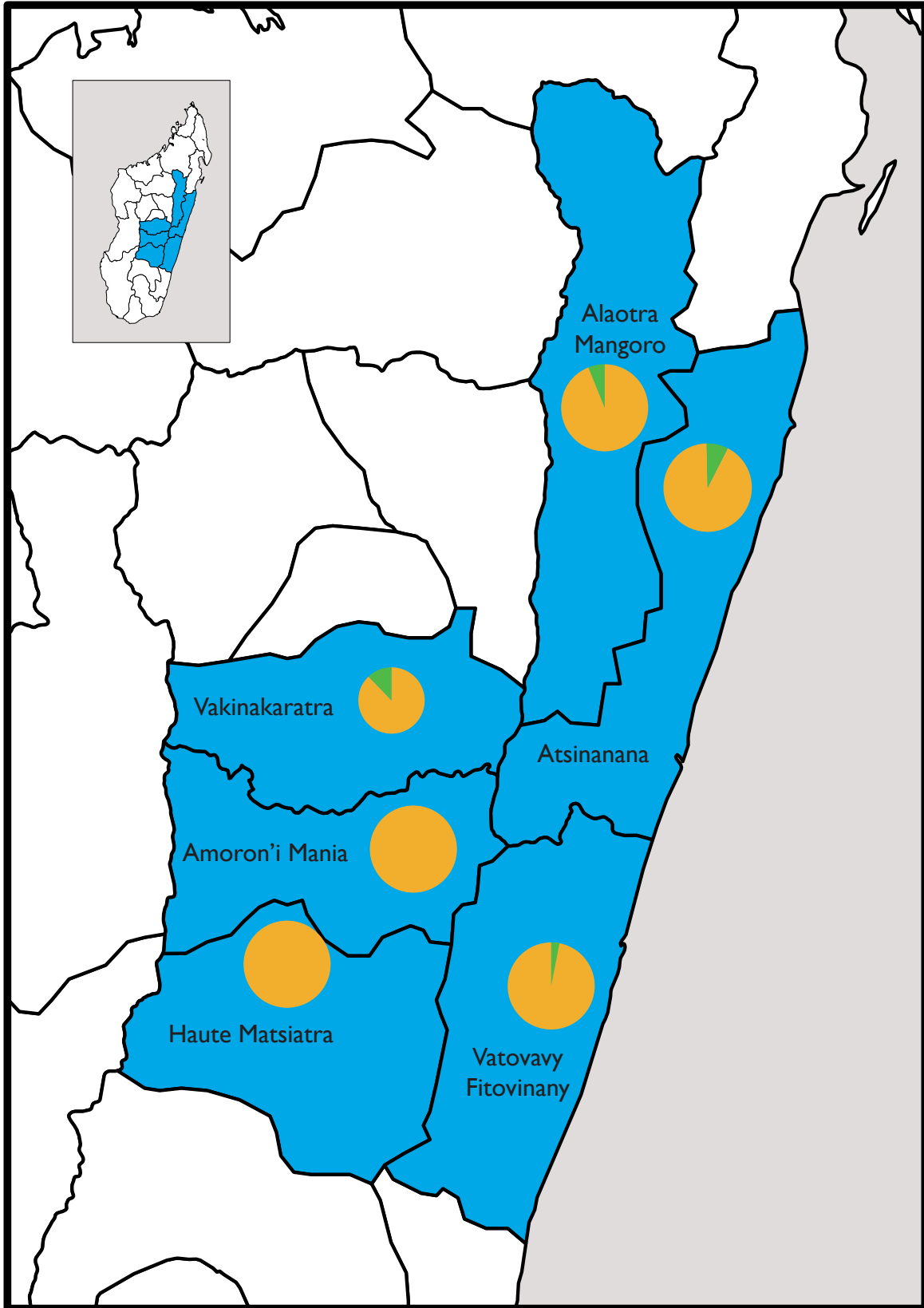
Femme maire



Homme maire



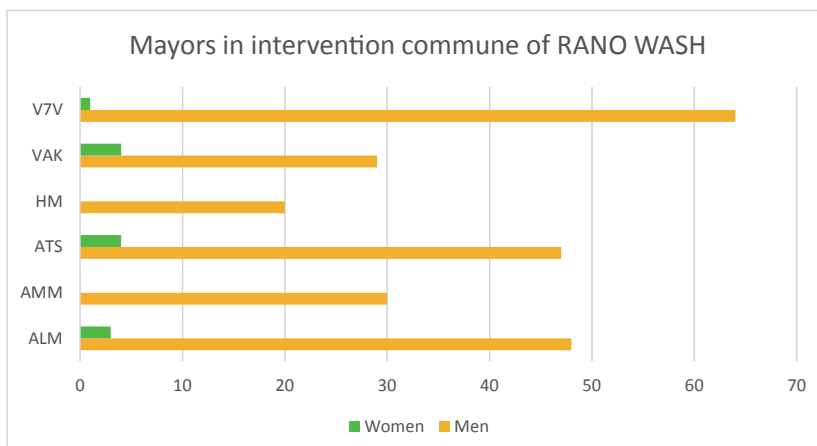
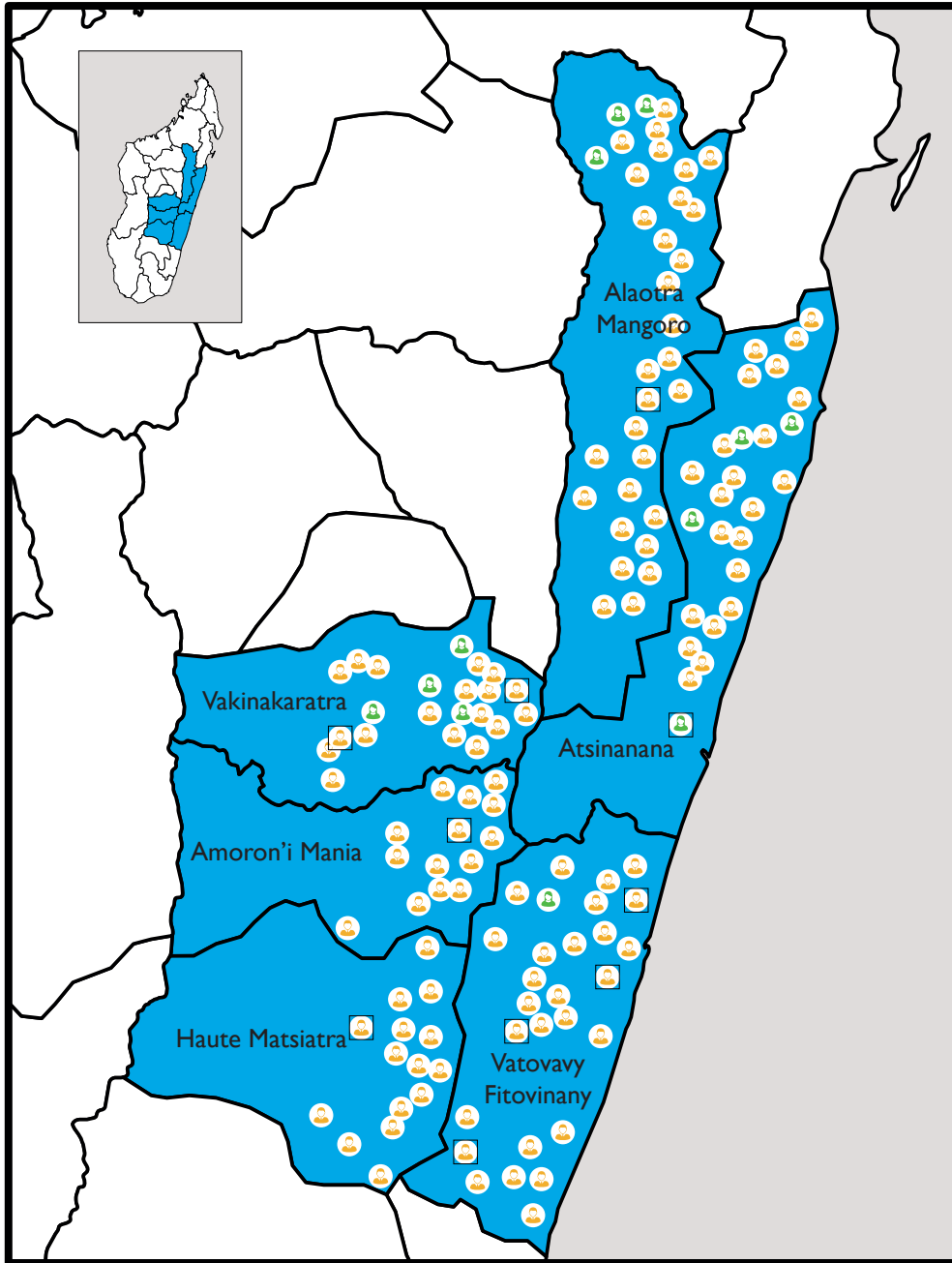
Homme maire moins de 30 ans



Femme maire



Homme maire

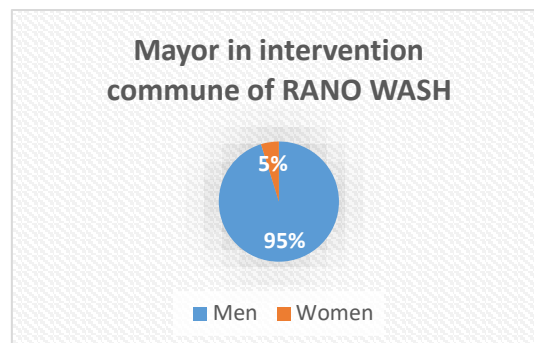


Highlights and lessons learned from Gender Mayor study in 250 intervention communes of RANO WASH

- **Only 12 of the 250 elected mayors are women, or 5%.** These women mayors are mainly located in the highlands of Madagascar, where communities are beginning to trust women leaders.

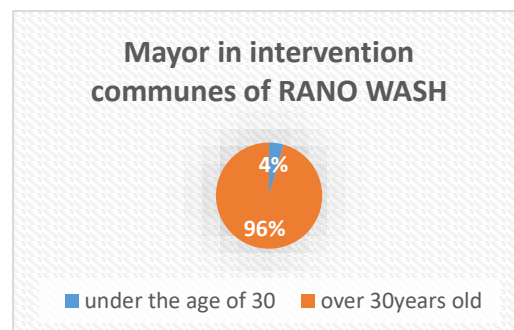
As lessons learned : (i) women's participation in municipal elections is very low, (ii) the domination of men in politics in general and in political structures particularly is still very pronounced, with women's participation in political structures not yet sufficiently highlighted, (iii) specific support for women mayors is required for them to perform well, (iv) and support for girls is useful in order to prepare them for decision-maker positions.

Regions	Men	Women
Alaotra Mangoro (ALM)	48	3
Amoroni Mania (AMM)	30	0
Atsinanana (ATS)	50	4
Haute Matsiatra (HM)	20	0
Vakinankaratra (VAK)	29	4
Vatovavy Fito Vinany (V7V)	64	1
Total	238	12



In addition, **only 11 of the 250 mayors are young people under the age of 30,¹** including 10 men and just one woman. According to Madagascar's national youth policy, people under 30 are considered "young.". Indeed, although each political party seems to have a structure dedicated to young people, their presence is not felt at the level of elections. This can be explained by the fact that society's confidence in young people's leadership is low. ²

Mayors	Number
Under the age of 30	11
Over 30years old	239
Total	250



That's why, RANO WASH has designed and conducted a sensitization on the importance of women's representation in decision-making bodies, through the Brief gender parity in decision making bodies. In addition, in the coming quarters, RANO WASH will develop a capacity building program for women and youth leadership based on a need's analysis.

¹ Analyse de la participation des Femmes/Jeunes/Partis politiques aux élections municipales du 27 novembre 2019 à Madagascar, dans EISA Institut Electoral pour une Démocratie Durable en Afrique – source CENI Madagascar/MID
² Analyse de la participation des Femmes/Jeunes/Partis politiques aux élections municipales du 27 novembre 2019 à Madagascar, dans EISA Institut Electoral pour une Démocratie Durable en Afrique – source CENI Madagascar/MID